

CHAIRMAN'S REPORT 2023-2024

The 114th Annual General Meeting of the East Africa Natural History Society (EANHS) was held on Wednesday 15th May 2024 at the Louis Leakey Hall, Nairobi National Museum and virtually (via Zoom). Below is a summary of the Chairman's Report.



The EANHS Chairman Rupert Watson giving his report during the 114th AGM. Photo by B. Otiogo

Highlights on Progress May 2023 – April 2024

PILLAR ONE: SAVE SPECIES AND SITES

i. Preventing Extinctions

Secured suitable habitat for threatened birds through land purchase

- Habitat for Clarke's (Kilifi) Weaver, 288 more acres of Brachystegia forest bought, for a total of 2,861 acres in Dakatcha; and 1.4 acres added for 30 acres of high-altitude forest edge habitat in Taita Hills for the Critically Endangered Taita Apalis.



A Clarke's Weaver breeding site in Dakatcha Woodland.

Rapid response to wildlife poisoning enhanced

- Poisoning carcasses to punish predators kills many scavenging vultures. To respond, there are now 65 'vulture volunteers' in the Maasai Mara and Amboseli landscapes, 520 rangers trained on response protocol from 13 community conservancies and a National Reserve, and 5 community conservancies provided with poisoning response equipment.



Rapid response to wildlife poisoning protocol training for community conservancy rangers in Maasai Mara. Photo: NK Archives

ii. Improved Status of Threatened and Declining Species

- Carried out detailed species monitoring for 7 bird species: Clarke's (Kilifi) Weaver, Taita Apalis, Taita Thrush, Hinde's Babbler, Sharpe's Longclaw, Abbott's Starling and East Coast Akalat
- Supported National Museums of Kenya taxon experts to review RedListing of species - 9 butterfly species reflected in IUCN Red List
- Supported 2023 Annual Waterbird counts covering 6 Rift Valley lakes, coastal wetlands, and selected inland wetlands
- Updated information for 6 Ramsar sites in Kenya
- Contributed to the development of Grey Crowned Crane Single Species Conservation Action Plan.



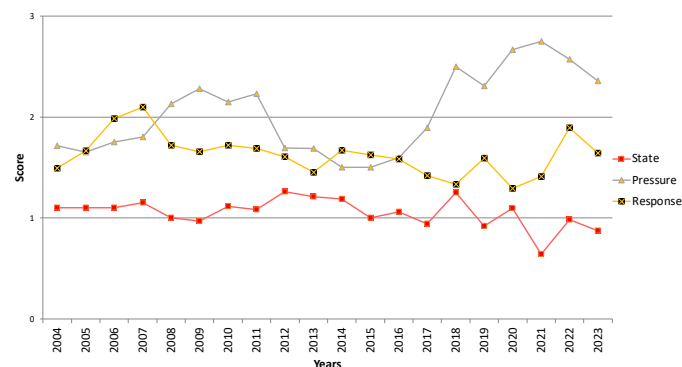
Bird monitoring at the Tana River Delta. Photo: NK Archives

iii. Ensured the Integrity of Key Biodiversity Areas

Monitored 68 KBAs collaboratively with KWS, KFS, NEMA and NMK

- 2023 – 2024 KBA Status and Trends Summary (Graph) is alarming:

IBA MONITORING RESULTS 2004 - 2023



SCORES: 0 = Very unfavourable, 1 = Unfavourable, 2 = Near favourable, 3 = Favourable

- STATE is DETERIORATING
- PRESSURE is MOUNTING
- RESPONSE is DECLINING

Identified and Conserved Ecological Corridors and Networks Resilient to Climate Change

- Promoted forest landscape restoration - Restored 2,200 ha of degraded areas in Taita Hills forests, Mt. Kenya Forest, Aberdare Forest, Tana River Delta, Dakatcha Woodland, and mangrove forests of Sabaki River Mouth

Cont'd from page 1

PILLAR TWO: FOSTER SUSTAINABILITY

i. Catalyse and Influence Policies, Legislation and Institutional Frameworks for Ecosystem Resilience

National Policy and Locally-led Policy work

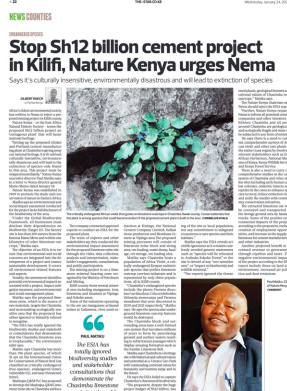
- Made 48 submissions to influence policies, legislation and institutional frameworks at county and national levels
- Supported 13 submissions by local communities to influence national and county policies and legislation
- Supported development of 6 county policies and legislation in Tana River, Lamu and Taita Taveta – Lamu Climate Change Act, Lamu Climate Finance Regulations, Tana River Environment Policy, Tana River Forest Bill, Taita-Taveta Forest Bill, Taita-Taveta Forest and Landscape Restoration Action Plan



Community engagement at a policy formulation forum. Photo: NK Archives

Demonstrate and Advocate the Values of Nature

- Sustained advocacy campaigns informed by science to safeguard Chasimba rare plant habitat in Kilifi from limestone mining, and reroute Mau Mau road to avoid Aberdare Forest
- Prompted Busia and Siaya County Governors to sign a joint communique committing to protect Yala Swamp in September 2023
- Catalyzed the adoption of the Yala Delta Land Use Plan by the Siaya County Executive



Encourage and Promote Nature-based Solutions and Sustainable Production and Supply Chains

Tana River Delta Green Heart Project for sustainable investment

- Tana River County adopted 2 policies to promote green investment
- Tana Green Heart Committee and Secretariat operational
- Drafted the Tana Green Heart strategic plan, procedure manual, and investor vetting guidelines
- Surveyed 3 Green Industrial Park sites in Minjila and Garsen
- Capacitated 11 cooperatives to provide bulking and marketing support to community producers
- Market links established for chilli value chains through contract farming
- Scoping to strengthen the sesame (sim-sim) export value chain conducted by Olvea Limited

ii. Promote and Support Effective Conservation Partnerships Locally, Nationally and Internationally

- Nature Kenya is a BirdLife Partner, IUCN and SAN (Sustainable Agriculture Network) member and a collaborator with Kenya national and county governments and local communities

- Dr. Paul Matiku elected as Vice President of the Sustainable Agriculture Global Board in a meeting held in Spain in April 2023
- Dr. Paul Matiku elected Co-Chair of Global Key Biodiversity Area (KBA) Committee in 2024 and represented Nature Kenya at KBA Policy Working Group, KBA Secretariat meeting, and CoP planning for the KBA Committee
- Nature Kenya participated in an online capacity-building seminar for CITES implementing parties' officials
- Nature Kenya hosted BirdLife International CEO Martin Harper, NABU President Jörg-Andreas Krüger, and six BirdLife Africa partners during the AfriEvo project close-out workshop in Nairobi

PILLAR THREE: BUILD SUPPORT

i. Build Grassroot Networks and Capacity for Nature Conservation

There are now 30 Site Support Groups (SSGs) – local community groups working with Nature Kenya – active in 26 priority KBAs

- SSGs monitor species: 21 SSGs in 19 KBAs conducted monitoring of species and habitats
- SSGs restore and safeguard habitats
- SSGs educate and create awareness
- SSGs influence policy
- SSGs promote nature-friendly livelihoods



A vulture conservation awareness outreach in Mara. Photo: NK Archives

Environmental education, awareness creation and capacity building

- Education and Awareness:** 58,821 people reached by 21 SSGs through school outreaches, churches and public gatherings
- Training:** 57 members from 28 SSGs participated in the annual national SSG training workshop
- Adaptation and resilience building:** Capacity in Climate Smart Agriculture enhanced for 628 SSG members in Tana, Yala, Mutitu, Mumoni, Dakatcha, Taita, Arabuko-Sokoke

Promote sustainable livelihoods

Eleven SSGs earned Ksh. 93,451,589 through nature-based income-generating activities

- Climate-smart Agriculture Ksh.39.2 million
- Butterfly farming Ksh.15 million
- Beekeeping Ksh.10.4 million
- Ecotourism Ksh.4.6 million
- Tree seedling sale Ksh.2 million
- Fish farming Ksh.1.7 million



A poultry farmer in Yala.

For updates visit

www.naturekenya.org

EDITORIAL TEAM

Fleur Ng'weno, Angela Mecha, Richard Kipngeno and John Mwacharo

LAYOUT

John Mwacharo

FRONT BANNER

Peter Usher



For contributions, advertising and subscriptions, contact us by:

Post: P. O. Box 44486 GPO, Nairobi

Telephone: 020 3537568/0780149200/0771343138

Email: office@naturekenya.org

Published with support from:



- Improved goat rearing Ksh.1.4 million
- Poultry farming Ksh.425,040
- Papyrus weaving Ksh.303,400
- Others Ksh.19.15 million



A past Wednesday morning bird walk. Photo: NK Archives

ii. Build Constituency and Membership Base for Nature Kenya

Engagement with Members

- Nature Net and online talks each month
- In Nairobi, weekly morning bird walks, monthly Sunday outings and a weekend trip
- In Malindi, weekly bird walks and monthly Saturday outings
- Kenya Birding issue 17 printed and distributed

Communication

- Media appearances on print, radio, television and online platforms
- Actively engaged on social media
- Participated in Nairobi ASK Trade Fair
- Birding event with New York Times held in Nairobi National Park

Corporate Support

- Continued tree-growing engagement with: Kenya Breweries Ltd 100,000 trees; Coca-Cola Beverages Africa-Kenya 30,000 trees; and Privatization Authority 1,200 trees
- Received support from Wild Flavours worth USD 10,000 towards conservation work
- Air Kenya purchased 1,000 copies of Kenya Birding magazine for in-flight reading
- Lungs for Kenya Charity Golf Tournament to raise funds to restore Mt. Kenya Forest. The 14th edition was held on 15th March 2024 and raised Ksh 1,048,105, including sponsorships and gift donations from 17 corporates and five individuals.



Tree planting engagement with Kenya Breweries Limited in Hombu Forest. Photo by J. Mwacharo

Global Big Day Summary

On May 11, eBird's Global Big Day, birders around the world went out to enjoy birds and submitted their observations through the eBird mobile app. The day is also celebrated as the World Migratory Bird Day.

Eleven Site Support Groups (SSGs) affiliated to Nature Kenya took part in the event in Lake Elmenteita, Ruma NP, South Nandi Forest, Kinangop

Grasslands, Dakatcha Woodland, Taita Hills, Mount Kenya, Dunga Swamp, Yala Swamp, Tana River Delta and Sabaki Estuary Key Biodiversity Areas.

Kenya was ranked 11th in the world with 712 species observed on 248 checklists submitted. The country's top hotspot was Lewa Wildlife Conservancy with 219 species.

June Sky Watch

By Fleur Ng'weno

In the first few days of June, six planets will stretch across the eastern sky at dawn, from the horizon to high overhead. Two of those planets, however, Uranus and Neptune, can only be seen with powerful telescopes. Bright Jupiter and Mercury will be very close to the glare of the rising sun. On June 3 and

4, the waning crescent moon will be above them, and then reddish Mars and golden Saturn much higher in the sky. For more information see https://earthsky.org/tonight/lineup-of-6-planets-morning-june-3-4-2024/?mc_cid=279b4763f1&mc_eid=9415ab4369

INSECT COMMITTEE OF NATURE KENYA

DUDU WALK

SAT 29 JUNE

10AM - 12.30PM

Join our Dudu Walk at the **Nairobi National Museum Grounds** and get to encounter, identify and learn more about insects!

www.discoverpollinators.org
insects.eanhs@gmail.com

Birding Updates

Wednesday Morning Birdwalks in Nairobi

5th June – City Park. Meet at 8:30 am at the parking near the Coca Cola Kiosk. Directions: The entrance is on Limuru Road, opposite Aga Khan Hospital and next to City Park Market. Currently there are road works on that part of Limuru Road, so proceed carefully. There is a parking fee of Ksh.300 for those with cars, payable via Mpesa.

12th June – Museum Grounds/Michuki Memorial Park. Meet at 8:00 am in the open space in front of the entrance to the museum galleries.

19th June – Manguo Pond, Limuru. Meet at 8.30 am at Manguo Pond, off the upper Nairobi-Naivasha Road, just past the flyover to Limuru.

26th June – Paradise Lost. Meet at Paradise Lost Main Gate at 8:30 am. Directions: Take Kiambu Road. Turn Left at Paradise Lost junction in Thindigua after Runda Greens before Quick Mart Supermarket. Turn right at Kencom Apartments just after Kasarini Primary School. It's about 500m to the main gate. Thanks to the management for welcoming the birdwalk.

16th June Sunday Birdwatch – Ologesailie Prehistoric Site. Meet at 8:30 am in the Ologesailie Prehistoric Site's Car Park area. It's about 90 kms southwest of Nairobi on Magadi Road. Directions: Coming from the city centre, take Langata Road to Magadi Road. After Ongata Rongai and Kiserian, you will reach the edge of the Rift Valley and travel down many steep hills. The Ologesailie Prehistoric Site's signpost is on the left after Tinga (Ol Tepesi) Shopping Centre.

If you have questions, please write < news@naturekenya.org> or phone 0780-149200.

Bird Ringing at Nairobi National Museum grounds usually take place on Tuesday mornings. Please confirm with Titus Imboma <Imbomati911@gmail.com> Phone 0721-649452.

Thursday Birdwalks in Malindi

Please note that all of the Thursday bird walks will be early in the morning at 7:00 am

6th June – Mtangani via Light International School. Meet up at 7:00 am at Malindi Museum near Nature Kenya Membership Office. The bird walk will take 2-3 hours.

13th June – Mayungu. Meet at 7:00 am at Malindi Museum near Nature Kenya Membership Office. The bird walk will take 2 to 3 hours.

20th June – Malindi Museum Ground and Seafont. Meet at 7:00 am at the Malindi Museum near Nature Kenya Membership Office. The bird walk is likely to take 2 hours.

27th June – The Hanging Garden of Malindi, courtesy of Mr. Nick. We thank him for welcoming the bird walk. Meet at 7:00 am at Malindi Museum near Nature Kenya Membership Office, The bird watch is likely to last 2 hours.

29th June. Saturday Birdwatch – Kibaoni Nature Kenya Reserve, Dakatcha Woodland. Thanks to the Dakatcha Woodland Conservation Group for welcoming the walk.

Meet at **6:30 am** at Malindi Museum. For those with transport, the drive will take about one hour, all on tarmac until the entrance road. Please note that we also have space for 6 people only. To book a place, reach out to us **before 21st June** through: malindimembers@naturekenya.org

Carry your identity card (ID) or passport. It will be a half a day trip, bring snacks and drinking water.

For more information, email: malindimembers@naturekenya.org or phone 0725-223042.

Mombasa Birdwalks are held the 3rd Saturday of each month. To check meeting time and place, check Facebook page: <https://www.facebook.com/groups/FFJmombasa/>

Or contact: Taibali Hamzali <thamzali@gmail.com> / 0733-980540 or Kelvin Mazera <klvnrua@yahoo.com> / 0720-928783



Tree Walk
By Nature Kenya
Plants Committee

Venue: National Museums of Kenya
Meet at Nairobi Museum main gate
Date: Friday 28th June Time: 9:00 AM
Contact: 0780 149200 or 0726 006283



5 JUNE
WORLD ENVIRONMENT DAY

We are
#GenerationRestoration

Our Land. Our Future
We are
#GenerationRestoration

WORLD ENVIRONMENT DAY

UN environment programme

Kingdom of Saudi Arabia 2024

Yes! Start my NatureKenya membership

Surname _____	MEMBERSHIP TYPES	
First Name _____	Ksh Per Year	
Ms/Mr/Title _____	Full	2,000
Address _____	Sponsor	6,000
Tel. _____	Family	2,800
Mobile _____	Student	1,200
Email _____	Schools, Clubs	1,500
	Corporate SME	50,000
	Corporate Regular	100,000
	Corporate Plus	250,000
	Corporate Sponsor	500,000
	Corporate Partner	1,000,000



JOIN/RENEW MEMBERSHIP

- Select 'Lipa na Mpesa'
- Select 'Pay Bill'
- Enter business number **100300**
- Enter account number (put your **lapsed membership number or write new member**)
- Enter the amount, enter your PIN
- Confirm details & press OK

For details on associated groups such as Youth Committee, Succulenta, and Friends of Nairobi Arboretum or City Park, contact office@naturekenya.org