



CHAIRMAN'S REPORT 2022-2023

The 113th Annual General Meeting of the East Africa Natural History Society (EANHS) was held on Wednesday 3rd, May 2023 at the Louis Leakey hall, Nairobi National Museum and virtually (via Zoom). Below is a summary of the Chairman's Report.



The EANHS Chairman Rupert Watson addresses members during the 113th AGM. Photo by J. Sese

Highlights on Progress May 2022 – April 2023

PILLAR ONE: SAVE SPECIES AND SITES

i. Prevent Extinctions

Saving African Vultures

- 65 Vulture Volunteers in 8,000km² monitoring vulture poisoning, with rapid response to wildlife poisoning in Mara/ Amboseli landscape
- 314 rangers from 14 conservancies trained on Rapid Response to Wildlife Poisoning
- 33 predator-proof bomas constructed to reduce human-wildlife conflict.



Construction of a predator-proof boma.

Land purchase

- Cumulative 2,533 acres for Clarke's Weaver, 27 acres for Taita Apalis

ii. Improve Status of Threatened and Declining Species

- IUCN Redlisting data for 79 species (10 plants, 16 herps, 25 fish, 3 dragonflies, 9 butterflies and 12 small mammals) consolidated and published in collaboration with National Museums of Kenya (NMK) taxon leads
- Detailed species monitoring carried out for 6 species (Clarke's Weaver, East Coast Akalat, Fischer's Turaco, Taita Apalis, Taita Thrush and Hinde's Babbler)
- Common Bird Monitoring conducted in 13 KBAs and Detailed monitoring in 20 KBAs
- Waterbird counts conducted in Rift Valley lakes and other sites



A Golden-rumped Sengi (elephant shrew) in Arabuko-Sokoke.

Photo by N. Rottcher

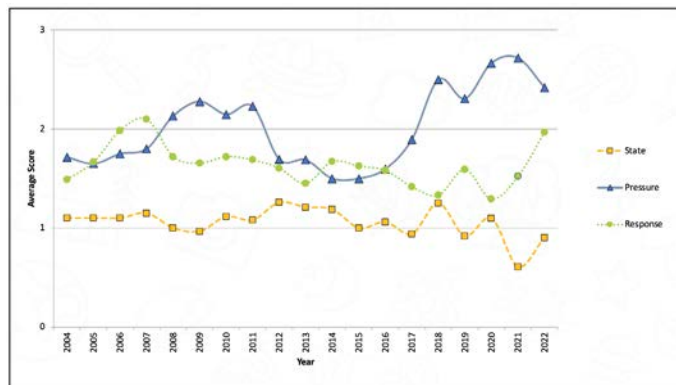
Ensure the Integrity of Key Biodiversity Areas

- 101,971 ha of Tana Delta put under Participatory Forest Management
- 12 Participatory Forest Management Plans reviewed and updated
- Restoration Opportunity Assessment Methodology (ROAM) Report informing restoration efforts
- 1,200 ha restored (1.2 million trees planted) countrywide
- 6,500 ha restored through collection of 9 tonnes of seed in Tana Delta
- 1,100 ha of Yala papyrus restored through direct planting (500ha) and natural regeneration (600ha)
- 2,300 households adopted energy-saving cook stoves
- 32 Climate-smart schools with energy saving stoves (Tana, Arabuko-Sokoke, Dakatcha, Taita, Mt. Kenya).



Tree planting in Mt. Kenya.

IBA MONITORING RESULTS 2004 - 2022



SCORES: 0 = Very unfavourable, 1 = Unfavourable, 2 = Near favourable, 3 = Favourable

State: Declining Pressure: Mounting Response: reduced

PILLAR TWO: FOSTER SUSTAINABILITY

i. Promote and Support Effective Conservation Partnerships Locally, Nationally and Internationally

- Nature Kenya Executive Director Dr. Matiku in Government delegation at the Convention on Biological Diversity (CBD) negotiations during CBD Conference of the Parties (COP 15) in Montreal, Canada.

ii. Catalyse and Influence Policies, Legislation and Institutional Frameworks for Ecosystem Resilience

- Influencing national and global conservation policy
- Participated at high level national and County fora (International Days, policy dialogues, EIAs, tree planting, national reporting)
- Sustainable Forest Management Rules developed by Government with Nature Kenya support
- 67 submissions made to influence development policies at county and national level
- Directly influenced County Conservation Policy (Forest, Climate, Water) at 10 Counties: Lamu, Kilifi, Tana River, Narok, Nyeri, Meru, Tharaka Nithi, Embu, Kirinyaga

Cont'd from page 1

- Yala Delta Land Use Plan approved by Busia and Siaya County governments
- Yala Indigenous & Community Conservation Area (ICCA) Committee registered as a Community Wildlife Association.

Ssg participation in policy and advocacy work at different levels

- 22 SSGs submitted letters to National Government and memoranda to influence County Integrated Development Plans (CIDPs) in 20 counties.

Encourage and Promote Nature-based Solutions and Sustainable Production and Supply Chains

- Catalyzed development of Tana River County Trade and Investment Policy to promote green investment
- 5,887 households engaged on climate change resilience and adaptation
- 36 County Agricultural Extension Officers and 500 farmers in Tana River, Taita Taveta and Kilifi counties trained on climate-smart agriculture
- 16 co-operative societies established in Tana and Yala deltas, investment in green value chains supported.



A climate-smart agriculture beneficiary.

PILLAR THREE: BUILD SUPPORT

i. Expand and Strengthen the SSG Network at Priority Sites and Promote Grassroot Engagement in Monitoring, Education and Advocacy

Strengthening community groups to act as local conservation champions

- Site Action: 29 Site Support Groups (SSGs) present at 25 sites
- Education: 21 SSGs in 20 KBAs provided education and awareness to 52,575 people
- Training: 48 members from 23 SSGs participated in National SSG training workshop
- 5 SSGs (Dunga, Mida, Mt. Kenya, Kereita, Taita Hills) organize monthly bird walks.



Marking of the World Wetlands Day in Yala, Siaya County.

Ssg engagement in biodiversity monitoring

- 14 SSGs engaged in site monitoring – Yala, Taita, Mt. Kenya, Kereita, Kinangop, South Nandi, Cherangani, Sabaki, Tana Delta, Dakatcha, Mutitu, Elmenteita, Mida Creek
- 4 SSGs (Mutitu, Mumoni, Kereita and Lake Elmenteita) trained on IBA Biodiversity Monitoring.



Site monitoring at Mida Creek.

15 SSGs earned Ksh. 46,926,887 through nature-based income generating activities

- Climate-smart Agriculture Ksh. 14,580,797
- Butterfly farming Ksh. 10,819,700
- Beekeeping Ksh. 7,872,400
- Ecotourism Ksh. 4,693,100
- Fish farming Ksh. 2,564,440
- Tree seedling sales Ksh. 2,029,680
- Loans and savings Ksh. 2,039,300
- Wool spinning and weaving Ksh. 1,600,000
- Poultry farming Ksh. 255,050
- Papyrus weaving Ksh. 229,430
- Improved goat rearing Ksh. 43,000
- Equipment hire Ksh. 199,990



Wool spinning products by the Friends of Kinangop Plateau SSG.

ii. Mobilize Public and Political Support for Nature

SSG engagement with media to publicize their grassroots conservation activities

- 7 SSGs in published media articles communicating their work (Yala, Taita, Mt. Kenya, Tana Delta, Dakatcha, Mumoni, Kinangop, Kereita)
- 3 SSGs featured in radio talks to communicate their work (Yala, Mutitu, Dunga)
- 19 SSGs marked 12 important global days—7,000 people

For updates visit
www.naturekenya.org

EDITORIAL TEAM

Fleur Ng'weno, Angela Mecha,
Richard Kipngeno and John
Mwacharo

LAYOUT

John Mwacharo

FRONT BANNER

Lorenzo Barelli



For contributions, advertising and subscriptions, contact us by:

Post: P. O. Box 44486 GPO, Nairobi

Telephone: 020 3537568/0780149200/0751624312/ 0771343138

Email: office@naturekenya.org

Published with support from:



Communication

- Media engagement – 53 appearances on national television and radio
- Social media – Active on Facebook, Twitter, Instagram, LinkedIn and YouTube
- 8 episodes of Nature Matters series produced and uploaded on YouTube
- Online Petitions: Yala Swamp NLC allocation, Forest Amendment Bill.

iii. Recruit and retain members

- Malindi Membership Office fully operational
- Six new corporate members
- Engagement with members
 - 51 Wednesday morning bird walks
 - 11 Sunday Birdwatch outings
 - Took part in May and October Global Big Days of birding
 - 12 Monthly talks
 - Kenya Birding issue 16 (2022) produced and distributed to members digitally
 - 12 issues of Nature Net produced online and some printed
 - Bioblitz organized jointly with the Swedish Embassy with 70 participants.



A past Malindi Membership Office event.

- **Charity Golf Tournament held on 31st March 2023 to raise funds to restore Mt. Kenya and Aberdare forests**
 - 137 golfers participated
 - Ksh. 2,093,600 raised
 - 26 corporates and 5 individuals supported the tournament by sponsoring and donating auction and raffle items.



Part of the action during the 2023 charity golf tournament.

- **Corporate Sponsorship for growing trees in 2022:**
 - Kenya Breweries Limited – 100,000 trees
 - Coca-Cola – 30,000 trees
 - Kenya Deposit Insurance Corporation – 5,000 trees
 - Privatization Commission – 1,200 trees

naturalist

Bird watchers in Voi participating in the May Global Big Day.

Photo by J. Mutali

Global Big Day Summary

Birdwatchers in Kenya joined the rest of the world in participating in eBird's Global Big Day on May 13. On this day, birders around the world go out to enjoy birds and submit their observations through the eBird mobile app. The day is also celebrated as the World Migratory Bird Day.

Nine Site Support Groups (SSGs) affiliated to Nature Kenya took part in the event in Lake Elmenteita, Ruma NP, South Nandi Forest, Kikuyu

Escarpment, Kinangop Grasslands, Dakatcha Woodland, Tana River Delta, Sabaki Estuary and Arabuko-Sokoke Forest Key Biodiversity Areas.

Kenya was ranked 8th in the world with 726 species and 247 checklists completed. Top Kenyan eBirder was Isaac Rapondi from Soysambu Conservancy, with 261 species. The country's top hotspot was Nairobi National Park with 240 species. 🐦

Bright Venus in June Skies

■ By Fleur Ng'weno

Planet Venus is the brilliant light in the western sky in the evenings this month. Above it is reddish Mars, quite faint now. During June, Venus and Mars seem to draw closer and closer together. The waxing crescent moon appears near Venus on June 21, and near both Venus and Mars on June 22. At dawn, Saturn is high in the sky, and Jupiter bright in the east. The waning moon is near Saturn on June 10, near Jupiter on the 14th.

The nearest stars

In the south, the constellation called the Southern Cross is upright on early evenings in early June. It's a group of four bright stars in the shape of a Christian cross, plus a faint fifth star. The Cross tilts to the west during the evening and during the month. To the east (left) of the Southern Cross are two very bright stars – Alpha and Beta

Centauri in the constellation of the Centaur. Bright Alpha Centauri is actually the light of three stars – the nearest stars to our solar system.

In the north, the constellation of the Plough or Big Dipper is low in the sky. Above it, higher in the northeast, is the bright orange star Arcturus. The blue-white star Spica is overhead. West of Spica is the constellation of Leo the Lion, with its bright star Regulus and a semi-circle of stars forming the lion's mane. Still further west, two sets of bright stars are the constellation Gemini, sinking towards the horizon. The waxing moon is near Regulus on June 23, near Spica on the 27th.

Moon and sun, June '23

Full moon – June 4. New moon – June 18. June solstice – when the Earth's north pole tilts towards the sun – June 21. 🌞

Birding Updates

Wednesday Morning Birdwalks in Nairobi

7th June – Paradise Lost. Meet at Paradise Lost Main Gate at 8:30 am. Directions: Take Kiambu Road. Turn Left at Paradise Lost junction in Thindigua after Runda Greens before Quick Mart Supermarket. Turn right at Kencom Apartments just after Kasarini Primary School. It's about 500m to the main gate. Thanks to the management for welcoming the birdwalk.

14th June – Entim Sidai Wellness Sanctuary. Meet at the Sanctuary's Main Gate at 8.30am Directions: Coming from the City Centre, take Ngong Road towards Karen. After Karen Police Station, take the first left turn at Zamani Business Park. Its 500m to Sanctuary's Main Gate.

21st June – Museum Grounds/Michuki Memorial Park. Meet at 8 am in the open space in front of the entrance to the museum galleries.

28th June – Ngong Road Forest Sanctuary. Meet at 8:30 am at the Main Gate. (There's a Sanctuary fee of Ksh. 100 for citizens.) Directions: Coming from the city centre, take Ngong Road towards Karen. After Jamhuri Sports Ground take the first left turn (before the Commonwealth Cemetery). It's 500m to the Sanctuary main gate.

18th June. Sunday Bird Watch – Kakuzi. Meet at the Kakuzi Main Entrance, at 8:30am. Directions: Drive along Thika Road past Kenol, turn left opposite Kakuzi Butchery / Kakuzi Timber Shop. Alternatively, take Muranga PSVs at Nyama Kima, Nairobi and alight at Kenol. From Kenol, take Makuyu PSVs and alight opposite Kakuzi Butchery / Kakuzi Timber Shop. Walk from there on the same side that you have alighted from Nairobi towards the main office.

If you have questions, please write to news@naturekenya.org or phone 0780-149200.

Bird Ringing at Nairobi National Museum grounds usually take place on Tuesday mornings. Please confirm with Titus Imboma <Imbomati911@gmail.com> Phone 0721-649452.

Malindi Thursday Birdwalks

1st June – Malindi Harbor. Meet at 7:00am at the Malindi Museum near Nature Kenya Membership Office.

8th June – Malindi Museum Ground. Meet at 4:00pm at the Malindi Museum near Nature Kenya Membership Office.

15th June – Mayungu. Meet at 4:00 pm at Malindi Museum Nature Kenya Membership Office.

22nd June — Malindi Museum Ground. Meet at 4:00pm at Malindi Museum Nature Kenya Membership Office .

29th June - Moi village. Meet at 4:00pm at Malindi Museum Nature Kenya Membership Office

24th June. Saturday Birdwatch. Hanging Gardens of Malindi (Kingfisher). Meet at 6:30am at Malindi Museum near Nature Kenya Office. The bird walk is likely to last 3 hours; bring drinking water

For more information, email: <malindimembers@naturekenya.org> or phone 0725223042.

Mombasa Birdwalks are held the 3rd Saturday of each month. To check meeting time and place, check Facebook page: <<https://www.facebook.com/groups/FFJmombasa/>>

Or contact: Taibali Hamzali <thamzali@gmail.com> / 0733-980540 or Kelvin Mazera <klvnrua@yahoo.com> / 0720-928783



World Environment Day
5 June
Solutions to plastic pollution

BEAT PLASTIC POLLUTION | WORLD ENVIRONMENT DAY | UN environment programme | Republic of Côte d'Ivoire



Tree Walk
By Nature Kenya Plants Committee

Venue: National Museums of Kenya
Meet at Nairobi Museum main gate
Date: Friday 30th June Time: 9:00 AM
Contact: 0780 149200 or 0726 006283

Yes! Start my NatureKenya membership

Surname _____
First Name _____
Ms/Mr/Title _____
Address _____
Tel. _____
Mobile _____
Email _____

MEMBERSHIP TYPES

Ksh Per Year	
Full	2,000
Sponsor	6,000
Family	2,800
Student	1,200
Schools, Clubs	1,500
Corporates	20,000 -30,000



JOIN/RENEW MEMBERSHIP

- Select 'Lipa na Mpesa'
- Select 'Pay Bill'
- Enter business number **100300**
- Enter account number (put your **lapsed membership number or write new member**)
- Enter the amount, enter your PIN
- Confirm details & press OK

For details on associated groups such as Youth Committee, Succulenta, and Friends of Nairobi Arboretum or City Park, contact office@naturekenya.org