



## CHAIRMAN'S REPORT 2020-2021

The 11th Annual General Meeting of the East Africa Natural History Society (EANHS) was held on Wednesday 19th, May 2021 virtually (via Zoom), in compliance with the government's Covid-19 Protocols. Below is the Chairman's Report.

### BACKGROUND

- Established in 1909 as the **East Africa Natural History Society (EANHS)**
- **EANHS** is one of Africa's oldest scientific Societies
- **Nature Kenya** is the **BirdLife** partner in Kenya
- **Aim** – Promotion of the study of natural history and conservation of nature in Eastern Africa



BACKGROUND

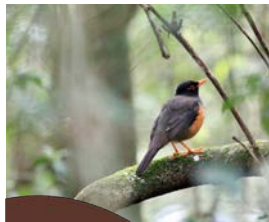
### Nature Kenya GUIDING THEMES



BACKGROUND

**STRATEGIC PILLARS**

BACKGROUND



PILLAR  
**01**

**Save Species**



PILLAR  
**02**

**Protect Sites and Habitats**



PILLAR  
**03**

**Encourage Ecological Sustainability**

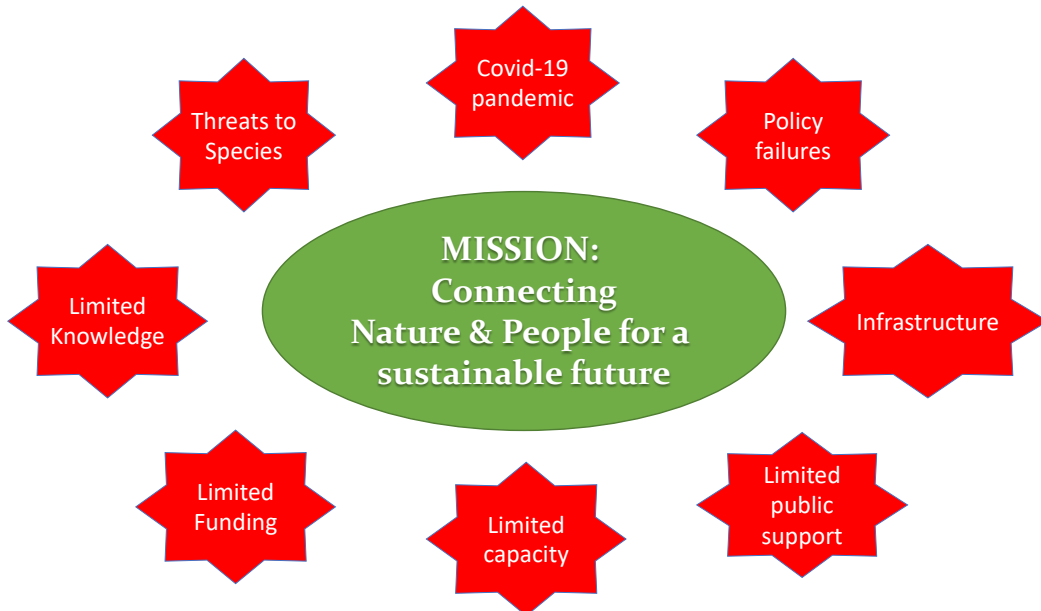


PILLAR  
**04**

**Empower People to Support Nature**

**Year 2020/21 Conservation Challenges**

BACKGROUND



For updates visit [www.naturekenya.org](http://www.naturekenya.org)

**EDITORIAL TEAM**  
Fleur Ng'weno, Gloria Waswa, Richard Kipngeno, Caroline Chebet and John Mwacharo

**LAYOUT**  
John Mwacharo

**FRONT BANNER**  
Lorenzo Barelli



**NatureKenya**

THE EAST AFRICA NATURAL HISTORY SOCIETY

Facebook: Nature-Kenya  
Twitter: @Nature\_Kenya  
Instagram: nature\_kenya  
YouTube: Nature Kenya

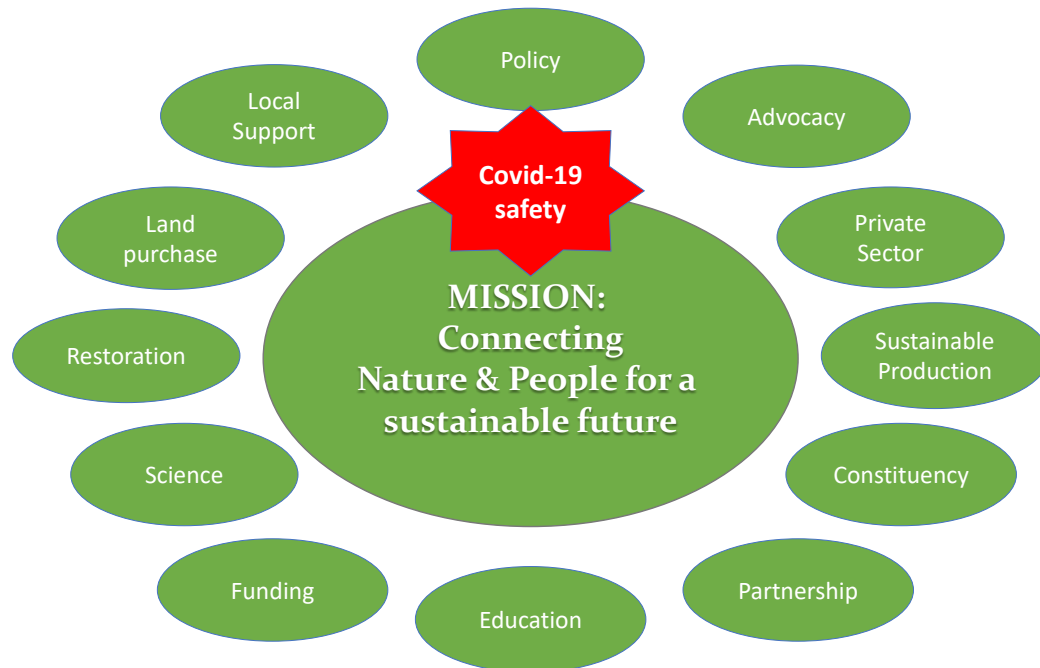
For contributions, advertising and subscriptions, contact us by:

**Post:** P. O. Box 44486 GPO, Nairobi  
**Telephone:** 020 3537568/0780149200/0751624312/ 0771343138  
**Email:** [office@naturekenya.org](mailto:office@naturekenya.org)

Printed with support from:



## 2020/21 Overarching Responses



## IMPACTS OF COVID-19

- Nature Kenya staff are safe this far
- Nature Kenya unrestricted income in danger
- Staff working from home
- Office closed to members and the public
- Limited sales, no membership recruitment drives taking place
- Only electronic Nature Net and Kenya Birding Magazine
- Events postponed (golf, birdwalks, talks and field trips)
- Gallery and library closed part of the year
- Increased Species and Site threats (fuel wood collection, charcoal burning, illegal logging, mangrove cutting, overgrazing in forests, snaring, pollution, encroachment, wildlife poisoning, debarking among others)
- Implementation of project activities constrained by Government Directives (limited number of people attending meetings and restricted movement)
- Loss of conservation related community livelihoods e.g. SSGs IGAs affected and Butterfly farming business in Arabuko-Sokoke collapsed
- Little conservation taking place nationally



## NATURE KENYA RESPONSES TO COVID-19

- **Society reserve proved invaluable:**
  - support to Site Support Groups (SSGs) to increase monitoring, awareness and advocacy
  - Support to Kipepeo farmers to enhance resilience and reduce forest threats
  - Support to water fowl counts
  - Kept core staff positions especially membership
- **Precautionary measures to keep staff and partners safe**
  - Office closed to the public
  - Staff working from home
  - No use of public means of transport
  - Produced and distributed 7,000 masks to partners
  - Sanitising and disinfecting common spaces
  - Online membership recruitment and electronic Nature Net
- **Innovated ways of implementing project activities to generate results**
- **Adaptive approaches to meetings: virtual AGM and other meetings**



PILLAR ONE

**SAVE SPECIES**



## PREVENT EXTINCTIONS

- **500 acres** of Dakatcha Woodland Safeguarded through Land Purchase- making the **Kamale Reserve 1,800 acres**
- **65 community volunteers** engaged to enhance surveillance on wildlife poisoning/human wildlife conflict incidents in Wildlife Poisoning Hotspots in Southern Rangeland



Demarcation of Indigenous Community Conservation Area in Dakatcha.



Wildlife poisoning response in Maasai Mara



Training on wildlife poisoning response

## IMPROVE STATUS OF SPECIES OF CONSERVATION CONCERN

- **Detailed monitoring** done in **nine Key Biodiversity Areas (KBAs)** by Site Support Groups (Yala, Tana, Dakatcha, Taita, Mt. Kenya, Kinangop, Kakamega, Cherengani, Arabuko)
- Findings of detailed Biodiversity Survey carried out in Tana River Delta;
  - White Backed Vultures (CR),
  - Endemic Tana River Mangabey and
  - Tana River Red Colobus show expansion of range into Core of the Tana Delta due to restoration,
  - Population of African Longfin Eel (NT) recorded.



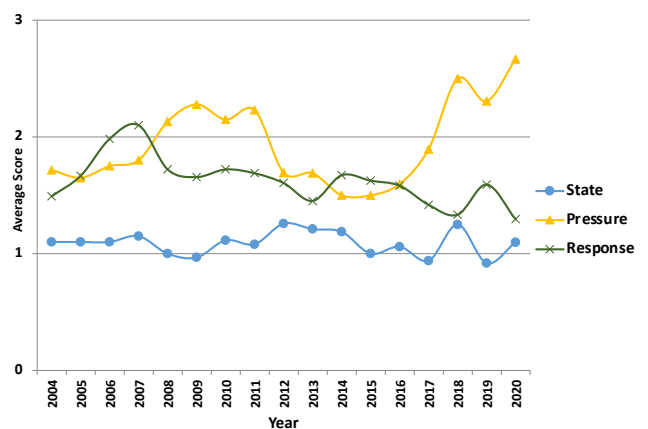
Tana River Red Colobus © M. Adamjee



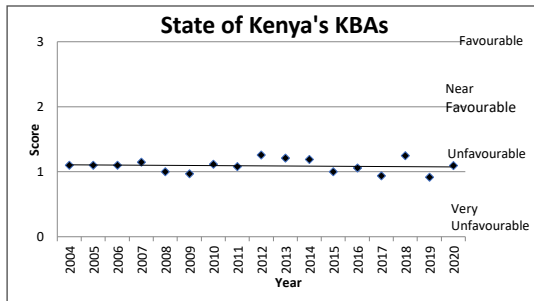
PILLAR TWO  
**CONSERVE SITES  
& HABITATS**

**IDENTIFY, MONITOR AND MAINTAIN THE INTEGRITY OF IMPORTANT BIRD AND BIODIVERSITY AREAS (KEY BIODIVERSITY AREAS)**

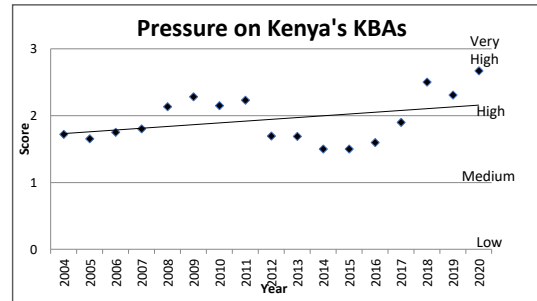
- IBA/KBA monitoring framework for 67 sites implemented collaboratively with KWS, KFS, NMK, SSGs and others
- 2019 KBA status and trends report published
- **Annual Water bird counts** carried out in **four Rift Valley lakes** in January 2021 collaboratively (NMK, KWS and Nature Kenya)
  - Populations of flamingos reducing due to increase in lake water levels due to increased rainfall, deforestation, siltation and unknown reasons.
- **Nine SSGs** carried out **common bird monitoring** in KBAs (Taita, Arabuko, Yala Swamp, South Nandi, Dakatcha, Mumoni, Mutitu, Mt. Kenya, Kinangop)



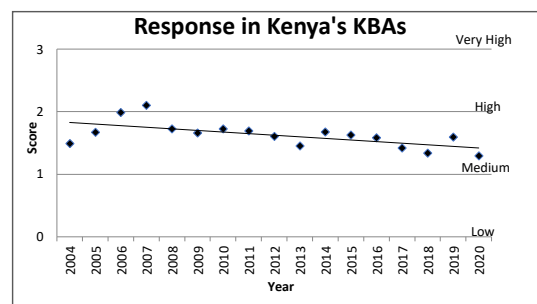
## IDENTIFY, MONITOR AND MAINTAIN THE INTEGRITY OF IMPORTANT BIRD AND BIODIVERSITY AREAS



State: stable



Pressure: mounting



Response: declining

## PROMOTE RESTORATION OF DEGRADED HABITATS IN IBAs AND KBAs

### Restoration Initiatives

- 800,000 (800ha) trees planted in KBAs
- 50 ha of papyrus restored in Yala Swamp
- Restoration Opportunities Assessment Methodology (ROAM) initiated in Tana Delta
- 17 stakeholders trained on the ROAM process

### Bringing 48,752 ha of Tana River Delta under sustainable forest management

- Four Participatory Forest Management (PFM) plans drafted.
- 380 representatives of Community Forest Associations (CFAs), Water Resources Users Associations (WRUAs) and Beach Management Units (BMUs) trained on tree nursery establishment, and seed collection
- Five WRUAs supported to develop five Sub-catchment Management plans



Tree planting in Tana River Delta



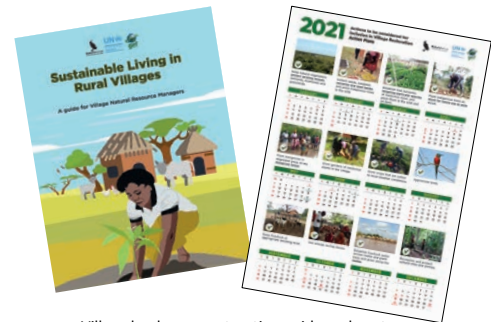
## PROMOTE RESTORATION OF DEGRADED HABITATS IN IBAs AND KBAs

**10,000 ha of degraded landscapes in Tana Delta being restored**

- **Two tons of indigenous tree seeds collected** for seeding degraded areas
- **Two million seedlings under production** in partnership with KFS and KEFRI
- Sensitization on restoration mainstreamed in county administration; **6,200 people reached through 75 meetings**
- A guide (4,000 copies) and poster calendar (6,000 copies) on restoration published and distributed
- **150,000 people sensitized on restoration** in Tana River, Lamu and Kilifi through Radio (Amani FM)



Community seed collection - Maderte, Tana River Delta.



Village landscape restoration guide and poster.

### PILLAR THREE

## **ENCOURAGE ECOLOGICAL SUSTAINABILITY**

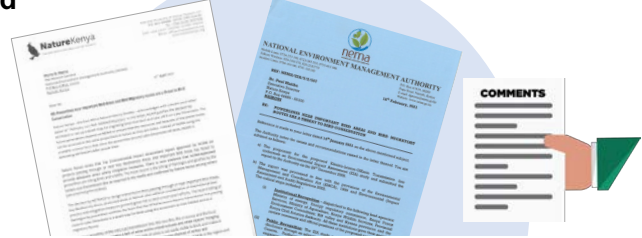




## DEMONSTRATE AND ADVOCATE THE VALUES OF NATURE

### Mainstreamed Biodiversity in National and County Policies and Laws

- Submitted comments on 35 policy processes including Environment Impact Assessments (EIA) reports, Bills and Policies
- Four counties (Tana River, Lamu, Kilifi and Taita) supported to develop policies and legislations:
  - ❑ County Environment Action Plan for Lamu and Tana
  - ❑ Forest policy for Lamu and Tana
  - ❑ Forest and Landscape restoration action plan for Lamu and Tana
  - ❑ Climate Change Bill, and Climate Finance Bill for Tana
  - ❑ Kilifi County Climate Change Policy and Taita Taveta Forest Policy



A county forest restoration forum in Mt. Kenya.

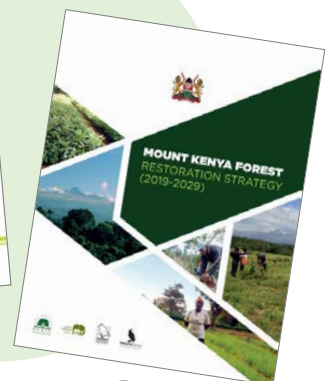
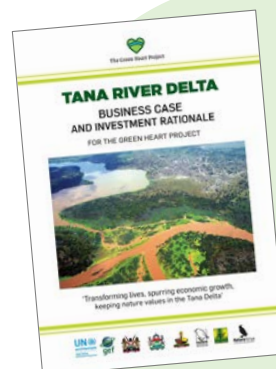
## DEMONSTRATE AND ADVOCATE THE VALUES OF NATURE

### Establishment of Tana Delta Green Heart Initiative to spur economy, create jobs and keep nature values

- Tana Delta Green Heart Business case
- Investment rationale,
- Road map and Action plan
- Prospectus

### Mainstreamed Restoration in National and County Policies and Laws

- Catalyzed National Forest Policy review: formulation of PFM Regulations and National Forest Restoration Action Plan
- Mt. Kenya Forest Restoration Strategy and Action plan 2019-2029 completed and disseminated



## **ENCOURAGE AND PROMOTE SUSTAINABLE PRODUCTION AND CONSUMPTION PATTERNS**

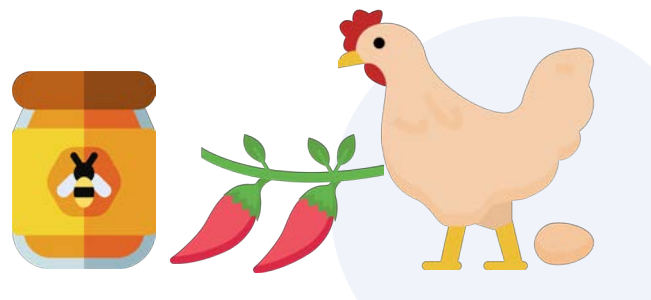
- **Positioned biodiversity and ecosystem services as part of the national economic agenda to meet the needs of humans:**
- Promoted uptake of Land Use Plans in 4 Counties (Siaya and Busia County, Tana River and Lamu)
- 116,867 ha of Tana ICCA being managed for multiple use with improved governance and management
- Village Natural Resources and Land Use Committees now at 54, with 9 additional committees having been established
- Yala Swamp and Tana River Indigenous and Community Conserved Area management Plans finalised



A Village Natural Resources and Land Use Committee meeting, Tana River Delta

## **ENCOURAGE AND PROMOTE SUSTAINABLE PRODUCTION AND CONSUMPTION PATTERNS**

- **Nature Kenya continued to implement a suite of climate smart livelihoods options as demonstrations:**
- Tana Delta and Yala Swamp drip irrigation farming, fast maturing high-value drought-resistant crops, shade net; fish farming, beekeeping, poultry among others.
- Tana Delta community enterprise and livelihoods demonstration center in operation: poultry, beekeeping, vegetables, fish, milk, and chilli farming initiated with links to private sector.
- Rearing of Gala goats and rice farming





PILLAR FOUR

**EMPOWER PEOPLE**

**BUILD GRASSROOT CAPACITY AND NETWORKS FOR NATURE CONSERVATION**

**SSGs engagement in County level decision making processes and awareness**

- **11 SSGs** involved in County Governments' decision making fora on formulation of conservation policies and regulations
- **3 SSGs** participated in County budget review meetings to lobby for allocation of funds for Environmental Conservation.
- **18 SSGs** participated in the **Global Birding Big Day** in October 2020. **810 species** recorded in the eBird Big Day
- **800 people** attended celebrations for global environmental days at **19 sites** (NB: few people reached due to COVID-19 restrictions)
- **4 SSGs** created awareness through TV and radio stations: Mayian FM, Rware FM, KTN and DW TV



Volunteers engaged in various awareness creation activities

PILLAR FOUR  
**EMPOWER PEOPLE TO SUPPORT NATURE**

PILLAR FOUR  
EMPOWER PEOPLE TO SUPPORT NATURE

## BUILD GRASSROOT CAPACITY AND NETWORKS FOR NATURE CONSERVATION

### Livelihood Improvement

**13 SSGs generated**  
**Ksh. 33,092,840**  
from Nature-based enterprises

**Eco-tourism:**  
Ksh. 3,980,260 from tour-guiding of 7,929 tourists (both international and domestic visitors)



**Rice production:**  
Ksh. 1,761,700 from sale of 29,060 kgs of rice



**Butterfly farming:**  
Ksh. 12,272,193 from sale of 62,520 pupae, after exports of pupae resumed



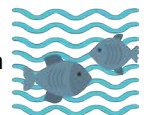
**Beekeeping:**  
KSh. 7,056,803 from sale of 8,038 kgs of honey



**Tree nursery:**  
Ksh. 1,442,650 from sale of 70,650 tree seedlings



**Fish farming:**  
KSh. 908,500 from sale of fish



- **Water bottling:** KENVO sold 6,997 packaged bottled water, generating Ksh. 1,756,440;
- **Handicrafts and weaving:** Yala Ecosystem SSG value addition on papyrus and palm leaves, generating KSh. 772,950;
- **Hall hire and accommodation:** Generated KSh. 1,931,950 from 3,080 visitors;
- **Poultry, goat, wool, horticultural products, grazing fees :** Ksh. 1,209,394.

## BUILD GRASSROOT CAPACITY AND NETWORKS FOR NATURE CONSERVATION

PILLAR FOUR  
EMPOWER PEOPLE TO SUPPORT NATURE

### Adapting to COVID-19 Membership Engagement

Wednesday Birdwalks resumed between February and March 2021, adhering to Ministry of Health Covid -19 protocols

- Participants met at the designated venue
- There was no sharing of binoculars and guidebooks
- There was no pooled transport
- Masks were a must
- Participants observed social distance



Wednesday Birdwalk at the Nairobi National Museum



## BUILD GRASSROOT CAPACITY AND NETWORKS FOR NATURE CONSERVATION

### Adapting to COVID-19

#### Membership Engagement

##### Virtual Members talks

- Members talks held virtually via Zoom
- Three Virtual talks held
- Over 120 members participated
- Talk recordings uploaded on YouTube



##### Virtual AGM

- Held virtually via Zoom on 19th August 2020
- 83 members participated
- 57 apologies recorded



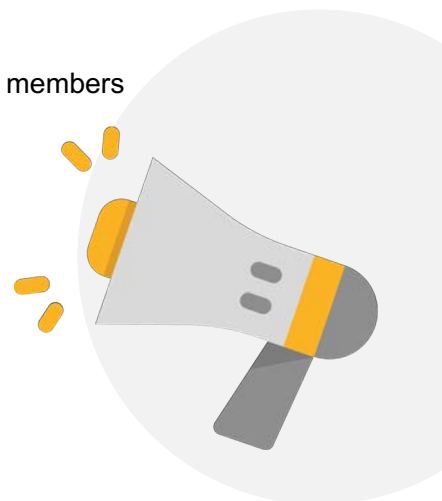
## BUILD GRASSROOT CAPACITY AND NETWORKS FOR NATURE CONSERVATION

### Membership Communication

- Kenya Birding Issue 14 (2020) produced and distributed to members
- 12 issues of Nature Nets produced and sent out to all active members



- Introduced bulk SMS services for membership communication



## BUILD GRASSROOT CAPACITY AND NETWORKS FOR NATURE CONSERVATION

### Membership Communication

- Active online: website, Facebook, Twitter, Instagram, YouTube and LinkedIn

 [www.naturekenya.org](http://www.naturekenya.org)
 @NatureKenyaEANHS
  @Nature\_Kenya
  nature\_kenya
  Nature Kenya

Facebook: 11,299 followers, Twitter: 6,488



## BUILD GRASSROOT CAPACITY AND NETWORKS FOR NATURE CONSERVATION

### Corporate Engagement and Sponsorships

Planted **40,000 trees** in Mt. Kenya and Aberdares supported by **Kenya Breweries Limited** in 2020

Engaged with Privatisation Commission staff in planting 700 trees in Kereita forest



PILLAR FOUR  
EMPOWER PEOPLE TO SUPPORT NATURE

# BUILD GRASSROOT CAPACITY AND NETWORKS FOR NATURE CONSERVATION

## Corporate Engagement and Sponsorships

Planted 400 trees in Kereita forest supported by a 11 year-old girl Patricia Owiyo.

Coca Cola Beverages Africa conducted a site visit at Mt . Kenya Forest



PILLAR FOUR  
EMPOWER PEOPLE TO SUPPORT NATURE

# BUILD GRASSROOT CAPACITY AND NETWORKS FOR NATURE CONSERVATION

## Membership Engagement

Membership activities were suspended due to Covid-9

- Wednesday Morning Birdwalks and Sunday Birdwatch suspended (*briefly resumed between February and March 2021*)
- Outdoor recruitment events suspended
- Members' trips suspended
- 2020 'Lungs for Kenya' charity golf tournament postponed



### FUNDING & SUPPORT

- BirdLife partnership
- Nature Kenya's fundraising capacity enhanced
- Project funders diversified
- 24 corporate members engaged
- RSPB core development support
- Efficient programme delivery and donor reporting



# Thank You

to the Board, staff, members and partners

### One wave is ebbing, will another come?

Nature Kenya members, we hope you remain safe and well. The figures from the Ministry of Health near the end of May indicate that there has been a drop in the Covid-19 positivity rate. This information comes as a relief but the situation remains uncertain. We hope vaccinations will resume. Nature Kenya is following the Kenya Government directives to help reduce the spread of the virus. We remain careful – wearing masks, washing hands and working from home when we can. Nature Kenya conservation efforts continue locally and nationally.

June 2021:

1. Wednesday Morning and Sunday Bird walks are resuming on June 2nd. For the month of June, bird walks will take place at the Museum Grounds.
2. Virtual talks: Bats of Arabuko-Sokoke Forest and nearby farmlands by Mammal Committee on 11th June and Reptiles of Kenya by Stephen Spawls on 25th June.
3. The Nature Kenya office is closed. However, membership can be renewed online <http://naturekenya.org/support/membership/> or via M-pesa. Books, honey, etc. may be purchased online or with M-pesa and collected on Mondays or by arrangement. Ring the bell at the entrance of the office behind the galleries.
4. Other Field trips and in-person talks remain suspended until further notice.
5. The EANHS/NMK Library is closed until July 1. Museum galleries and sites are open to the public under Ministry of Health guidelines (as at end May 2021).
6. Members will continue to receive an electronic version of the Nature Net.

Please support us as we work towards a greener future!

For clarifications or to report your observations on species and sites, kindly contact us through email: [office@naturekenya.org](mailto:office@naturekenya.org) or telephone: 020 3537568, 0780 149200, 0751 624312, 0771 343138

**Dr. Paul Matiku,**  
Executive Director, Nature Kenya – the East Africa Natural History Society



## Birding Updates

**Wednesday Morning Birdwalks** and **Sunday Birdwatch** are resuming, subject to Ministry of Health guidelines. No loaning of binoculars, no sharing of binoculars and guidebooks and no pooled transport. Please do not ask for lifts. Masks are a must and you may carry your own sanitizer.

**Birders Please Note!** Participants are meeting on site. The Wednesday Morning Birdwalks will take place at the Nairobi National Museum, meet at 8 am in the open space in front of the entrance to the museum galleries, near the Fisheries gate.

June 20th **Sunday Bird Watch** – Ngong Road Forest Sanctuary. Meet at 8:30 am at the Main Gate. (There's a Sanctuary fee of Ksh. 100 for citizens.) Directions: Coming from the city centre, take Ngong Road towards Karen. After Jamhuri Sports Ground (now under construction) take the first left turn (**before** the Commonwealth Cemetery). It's 500m to the Sanctuary main gate. It is a day trip; please bring water and lunch.

**Bird Ringing at Nairobi National Museum** grounds usually takes place on Tuesday mornings. Please confirm with Titus Imboma <Imbomati911@gmail.com> Phone 0721-649452

**Mombasa Birdwalks** are held the 3rd Saturday of each month. To check meeting time and place, check Facebook page: <<https://www.facebook.com/groups/FFJmombasa/>> Or contact: Taibali Hamzali <thamzali@gmail.com> / 0733-980540 or Kelvin Mazera <klvnrua@yahoo.com> / 0720-928783

Birders are reporting interesting sightings of Afro-tropical migratory birds. Send your records to:

**Kenya Bird Map** <<http://kenya.birdmap.africa/>>  
If you have questions re KBM, write to <kenyabirdmap@naturekenya.org>

And stay updated with the birding scene in Kenya by signing in to the new **KenyaBirdsnet** platform on Google Groups at: <https://groups.google.com/d/forum/kenyabirdsnet>

After signing in you will be able to post your records through the following email address: [kenyabirdsnet@googlegroups.com](mailto:kenyabirdsnet@googlegroups.com)

## June Evening Skies

BY FLEUR NG'WENO

### The nearest stars to our Earth

In the south, the constellation called the Southern Cross is upright on early evenings in early June. It's a group of four bright stars in the shape of a Christian cross. There's also a faint fifth star. The Cross tilts to the west during the evening and during the month. To the east (left) of the Southern Cross are two very bright stars – Alpha and Beta Centauri in the constellation of the Centaur. Bright Alpha Centauri is actually the light of three stars – the nearest stars to our Earth.

In the north, the constellation of the Plough or Big Dipper is low in the sky. Above it, high in the northeast, is the bright orange star Arcturus. The blue-white star Spica is overhead. West of Spica is the constellation of Leo the Lion, with its bright star Regulus and a semi-circle of stars forming the lion's mane. Still further west, two sets of bright stars are the constellation Gemini, sinking towards the horizon.

On a clear night from a dark location, you may see a faint open cluster of stars between Regulus and Pollux in Gemini. This is the Beehive or M44. During the last two weeks of June, the planet Mars, faint now, passes near the Beehive. The moon is near Mars and Pollux on June 13, near Regulus on June 15-16, and near Spica on the 19th.

### Planets and moon, June 2021

Beautiful bright Venus is low above the sunset in the evening. For a week or so, little Mercury is also there. On June 11, the slender crescent of the new moon is near Venus.

Golden Saturn and bright Jupiter rise in the east during the evening and are high in the west at dawn. The moon is near Saturn on June 28th and near Jupiter on June first and 29th.

### Sun

The June solstice – when the Earth's north pole tilts towards the sun – is on June 21st.



## Yes! Start my NatureKenya membership

Surname _____	<b>MEMBERSHIP TYPES</b> <i>Ksh Per Year</i> Full 2,000 Sponsor 6,000 Family 2,800 Student 1,200 Schools, Clubs 1,500 Corporates 20,000 -30,000
First Name _____	
Ms/Mr/Title _____	
Address _____	
Tel. _____	
Mobile _____	
Email _____	



### JOIN/RENEW MEMBERSHIP

- 👉 Select 'Lipa na Mpesa'
- 👉 Select 'Pay Bill'
- 👉 Enter business number 100300
- 👉 Enter account number (put your lapsed membership number or write new member)
- 👉 Enter the amount, enter your PIN
- 👉 Confirm details & press OK

For details on associated groups such as Youth Committee, Succulenta, and Friends of Nairobi Arboretum, City Park or Arabuko-Sokoke Forest, contact [office@naturekenya.org](mailto:office@naturekenya.org)