

Summary of Chairman's Report for 2017 - 2018



The EANHS Chairman Dr. Ian Gordon addresses members during the 108th AGM. PHOTO: J. MWACHARO

Year 2017/18 Conservation Challenges

- **Politics:** Electioneering year. Minds occupied by politics
- **Development vs Conservation:** Infrastructure—Roads, Standard gauge railway (SGR), LAPSET, Northern Transport Corridor, Irrigation, Coal power plant, and others
- **Ever mounting threats to species:** habitat loss, poor land use, landscape degradation, pollution, illegal logging, climate change, wildlife poisoning and poaching
- **Policy failures:** Lack of spatial policies and plans, weakened safeguard policies and poor implementation of good existing legislation
- **Limited public support:** Kenya is 45 million strong but NK membership is only 1,000
- **Limited capacity:** Weak national, county and local government institutions
- **Limited knowledge:** research gaps on species and sites and insufficient management plans and strategies
- **Limited funding:** simply less money for conservation

2017/18 Overarching Responses

Science: Identify, designate, monitor and maintain the integrity of Key Biodiversity Areas

Policy: Influence policies, legislation and institutional frameworks for ecosystem resilience

Advocacy: Explain and advocate the values of nature and mobilize public and political support for nature

Local Support: Build grassroots capacity and networks for nature conservation

Education: Educate young people about nature

Restoration: Promote restoration of degraded habitats in Key Biodiversity Areas

Land Purchase: Create effective ecological networks resilient to climate change

Partnerships: Promote and support effective conservation partnerships locally, nationally and internationally, e.g. with BirdLife

Private sector: Work with the private sector to promote best practices to mitigate negative impact of major developments e.g. on wind farms

Constituency: Build conservation constituency and membership base for Nature Kenya

Funding: Mobilize the resources needed to conserve and sustain ecosystems services

1. SAVE SPECIES

i) Prevent Extinctions

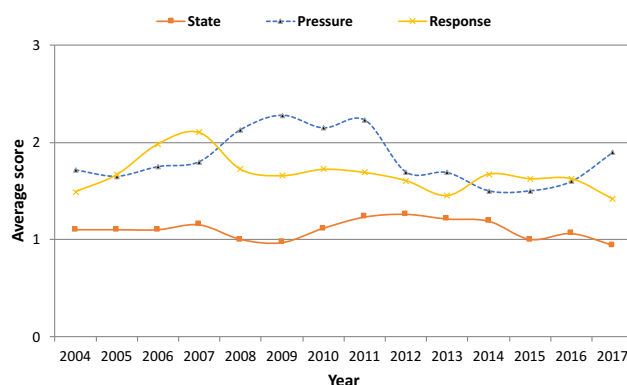
- Supported KWS to develop a National Wildlife Poisoning Response Protocol: clear and practical protocols and training, that will give local authorities the ability to rapidly respond to poisoning incidents as they are detected
- Represented on the National House Crow Control Committee, now coordinated by the Ministry of Tourism and Wildlife



ii) Monitor Species

- Carried out common bird monitoring at 15 Key Biodiversity Areas (Arabuko Sokoke Forest, Dakatcha Woodland, Taita Hills forests, Tana River Delta, Kianya Valley, Mukurwe-ini valleys, Yala Wetland, Lake Bogoria, Lake Naivasha, Lake Elementaita, Lake Magadi, Lake Ol'Bolessat, Lake Nakuru)

IBA MONITORING RESULTS 2004 - 2017



State: still unfavorable

Pressure: Increased

Response: reduced

SCORES: 0 = Very unfavourable,
1 = Unfavourable, 2 = Near favourable,
3 = Favourable

2. CONSERVE SITES & HABITATS

- Integrated and mainstreamed the Important Bird Area (IBA) conservation strategy into county development plans in 8 counties (Tana River, Kilifi, Taita Taveta, Kitui, Narok, Siaya, Nyandarua and Elgeyo Marakwet,)
- Carried out an Ecosystem Services Assessment in the proposed 95,000 ha of Community Conserved Area in Tana Delta
- 14 Community Forest Associations (CFAs) and 25 Site Support Groups (SSGs) planted 747,000 tree seedlings



Site monitoring at Dakatcha Woodland

Cont'd from page 1

3. ENCOURAGE ECOLOGICAL SUSTAINABILITY

- Catalysed and Influenced policies, legislation and institutional frameworks for ecosystem resilience
- Promoted conservation of landscapes through Land Use Planning
- Promoted sustainable production e.g. Kipeto Wind energy
- Promoted engagement of Site Support Groups in policy processes
- Supported 16 local schools to install clean cook stoves technology which saves 60% of fuel wood consumption equivalent to 56 acres of forest annually



PHOTO: G. OBUNGA

Pupils pose for a photograph next to their school's energy-saving stove in Taita

Engaged in policy and legislative processes at county, national and global levels

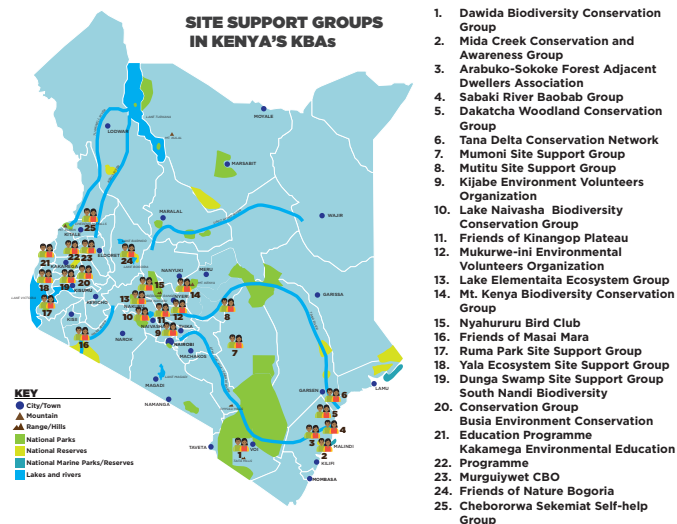
- Comments for 12 Environmental Impact Assessment and Strategic Environmental Assessment reports for proposed projects (dams, irrigation, standard gauge railway, roads, energy, power lines, etc) submitted to the National Environment Management Authority (NEMA)
- Four memoranda submitted to the National Assembly on land value index laws amendment and irrigation, petroleum and energy bills. Oral presentations on the petroleum and energy bills to the Parliamentary Committee on Energy
- Submitted memorandum to the National Taskforce on Forest Management and Logging Activities in Kenya
- Represented in key National Committees and fora, e.g national wetlands regulations, House Crow Control, Kenya Wildlife Forum, Kenya Forests Working Group, Conservation Alliance of Kenya, National Ramsar Committee and National Biodiversity Strategy and Action Plan (NBSAP)
- Submitted comments on the new Environmental (Strategic Assessment, Integrated Impact Assessment and Audit) Regulations
- Formulated an advocacy strategy on mainstreaming biodiversity into sectors of the economy. In July 2017 convened, in partnership with Ministry of Environment, a national dialogue on mainstreaming biodiversity into sectors of the economy, presided over by the Cabinet Secretary, Ministry of Environment and Natural Resources
- In March 2018 supported Ministry of Environment to convene a national workshop to review national progress towards implementation of the Convention on Biological Diversity (CBD) in regard to mainstreaming biodiversity into productive sectors. Out of this workshop a national report was submitted to the CBD's Subsidiary Body on Implementation
- Submitted a policy brief on wildlife policy

Business engagement in sustainable production

- Engaged with proponents of the proposed Kipeto wind farm to be located just 14 km from Kwenia KBA, one of the major national breeding sites for Critically Endangered Rüppell's Vulture
- The developers led by ACTIS agreed to uphold IFC Performance Standard 6 and ensure net gain for critically endangered vultures, and allocated \$1 million per year to fund biodiversity offsets and set up biodiversity committee including Nature Kenya
- The developers effectively engaged USAID to fund a national Strategic Environmental Assessment on Wind Farms placement, informed by a sensitivity mapping tool. The tool will provide information on overlaps between sites that are suitable for wind farms but would present threats to resident and migratory soaring birds of prey, other raptors and bats

Promotion of landscape conservation

- Implementation of Tana River Delta Land Use Plan (LUP) and Strategic Environmental Assessment (SEA) initiated with establishment of a 95,200 ha Community Conserved Area (CCA)
- Drafting of a LUP bill for Lamu County based on provisions and recommendations of the Tana Delta LUP ongoing.
- Successfully engaged Tana River & Siaya Counties to recognize LUP in County Integrated Development Plans (CIDP)
- Yala Swamp LUP and SEA completed with input from local communities, national government, Siaya and Busia County Governments



4. EMPOWER PEOPLE TO SUPPORT NATURE

Capacity Building

- **21 SSGs** (42 participants; 11 women and 31 men) trained and shared experiences during national SSG workshop 2017
- **15 SSGs** members from Taita hills & Dakatcha Woodland trained on apiculture techniques at Baraka Training Institute in Molo, Nakuru County
- **4 SSGs** from Kilifi County trained on advocacy and resource mobilization
- **5 SSG Members** (2-Yala, 1-Taita, 1-Dakatcha & 1-Arabuko) trained on Fundamentals of Ornithology (FoO)
- **5 CFAs** in Mt. Kenya developed action plans and business cases which were presented to water buyers and other stakeholders to support restoration of Mt. Kenya forest

For updates go to
www.naturekenya.org

Editorial Team

John Mwacharo
Norman Kiboi
Gloria Waswa
Fleur Ng'weno
Serah Munguti

Layout John Mwacharo
Front banner J. Mwacharo



NatureKenya

THE EAST AFRICA NATURAL HISTORY SOCIETY

[f Nature-Kenya](https://www.facebook.com/Nature-Kenya) [@Nature_Kenya](https://twitter.com/Nature_Kenya)

For contributions, advertising and subscriptions -
contact us at

P. O. Box 44486 GPO, Nairobi Tel: 020 3537568/ 0780149200/ 0751624312/ 0771343138
office@naturekenya.org www.naturekenya.org

Printed with support from:



Build Grassroots Capacity and Networks for Nature Conservation Local Monitoring and action

- SSGs are carrying out detailed monitoring at 6 sites (Kakamega, Taita, Dakatcha, Arabuko-Sokoke, Yala, Dunga)
- 23 SSGs are involved in Common Bird Monitoring
- 9 SSGs involved county decision making processes
- 7 SSGs implementing advocacy strategies
- 11 SSGs engaged government in their site activities and advocacy (Dunga, Yala, Arabuko-Sokoke, Taita, Tana, Mt.Kenya, Bogoria, Cherangani, Kinangop, Naivasha, Dakatcha)
- 26 CFAs from 6 forest IBAs are implementing Forest Management Plans (9 CFAs at the coast (Taita 5, Arabuko 3 and Dakatcha 1) and 5 CFAs in Mt. Kenya, 3 in Nandi, 4 in Kakamega, 6 in Cherangani)
- 9 SSGs have active environment education programmes
- Established 2 new Site Support Groups (Ol'Bolessat & Elementaita) - for a total of 25 SSGs
- Increased SSGs membership base to 8,638 (Men 3,625 and women 5,013)
- 24,000 adults & 47,000 students reached during World Environment Day, World Migratory Bird Day, World Wildlife Day, International Day of Forests, and school and community outreach programme in 2017
- County forum including SSGs convened (Taita, Busia, Siaya, Kilifi)

Educate young people about nature

- 33,240 school children visited 9 resource centres across the country where they learned about the biodiversity in the Key Biodiversity Areas (KBAs) where resource centres are situated
- Wildlife Clubs of Kenya (WCK), in collaboration with Nature Kenya, created awareness about the critically endangered Taita Apalis, reaching 419 students and 19 teachers



PHOTO: J. MWACHARO

Learning about nature at the Nairobi National Museum

Livelihood Improvement

- Household income of SSG members increased by an average of 25% in the 2017
- Earnings by SSGs from nature-based enterprises totaled Ksh 61,359,660: from Beekeeping (18 SSGs), Tree seedlings (12 SSGs) Butterfly farming (Arabuko-Sokoke, Taita & Kakamega), Ecotourism (Arabuko-Sokoke, Mida Creek, Dakatcha, Kakamega, Dunga, Mt Kenya), Wool spinning products (Kinangop), Papyrus products (Yala), Fish farming (Yala, Taita, Dunga), and from Table Banking (sharing savings and loans).

Communication

- Published 11 issues of Nature Net, annual issue of Kenya Birding magazine, annual IBA Status and Trends Report and several brochures.
- Regular updates posted on NK's website, Facebook and Twitter accounts with 12,000 followers, and we are now active on Instagram
- Weekly Wednesday Morning birdwalks, monthly birding outings and weekend camping trips ongoing
- Participated in the British Bird Fair in August 2017, In collaboration with Kenya Tourism Board, promoting Kenya Birding magazine and bird tourism in Kenya.

5. FUNDING & SUPPORT

- Golf Tournament March 2018 raised funds to restore the water services provided by the Mount Kenya forests.
- Vivo Energy sponsored environmental awareness events in Dakatcha Woodland & Kinangop plateau; over 800 community members and school children participated; one classroom constructed in Dakatcha Woodland ;

- Kenya Breweries/East African Breweries sponsored the planting of 47,000 forest tree seedling in Mt. Kenya forest; 5 CFAs and 1 SSG issued with tree nursery implements and assorted tree seeds; 50 KBL/EABL staff and over 230 local community members participated in tree planting in Mt. Kenya forest
- Nature Kenya's fundraising capacity enhanced, with support from Royal Society for the Protection of Birds (UK)
- Collaboration with BirdLife Partners across the world
- Project funders diversified and core RSPB core development support retained
- 31 corporate members engaged
- Efficient programme delivery and donor reporting

THANK YOU to the Board, staff, members and partners

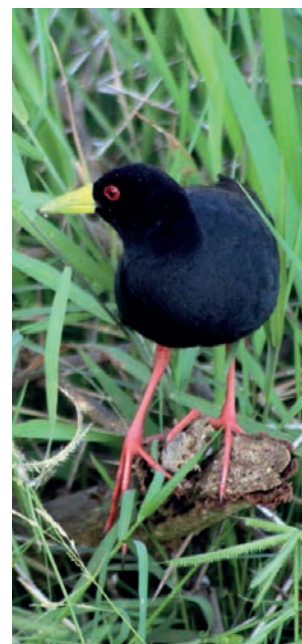


PHOTO: M. KIMATHI

Moon in June brings Eid ul Fitr

By F. Ng'weno

New moon is June 13, likely to be seen as a slender crescent on the 14th. This sighting will usher in the end of Ramadhan, a holy month in the Islamic calendar. The holiday of Eid ul Fitr is expected on June 15 or 16. Other moon phases are: June 6 - last quarter; June 20 - first quarter; June 28 - full moon.

Planets, June 2018

The planets are brilliant in the evening sky - when the clouds allow us to see them! Venus is the bright light in the west; Jupiter is the bright light high in the east. Golden Saturn rises in the east and is in the sky all night. Mars rises later in the evening and is high in the west at dawn. Mars glows orange-red and brighter than it has in years, as its orbit takes it close to the earth. In the second half of June, the small but bright planet Mercury rises above the sunset.

The moon is near Saturn on June 1st and 27-28, and near Mars on June 3rd and 30th and July 1st. The new crescent moon is near Venus on June 16th.

June stars

The constellation Leo the Lion is high in the west. You can imagine the bright star

Regulus as the heart of the lion. From Regulus, a line of stars forms a sickle shape, like the head and mane of a lion.

Arcturus, a sparkling orange star, is high in the north. It forms a triangle with the blue-white star Spica almost overhead, and the planet Jupiter in the east. The moon is near Regulus on June 18, near Spica on the 22nd, and near Jupiter on June 23-24.

Low in the northwest is the constellation of the Plough or Big Dipper. Can you see this constellation as a dipper - a deep, long-handled spoon for scooping up water?

In the south, the beautiful constellation of the Southern Cross stands upright, tilting towards the west during the evening. Two very bright stars, Alpha and Beta Centauri, seem to point toward the Southern Cross.

June sun

June 20 is the solstice, when the North Pole is most tilted towards the sun. Here on the equator, from mid March to mid September we see the sun traveling across the northern part of the sky during the day.

in the FIELD

JUNE AT A GLIMPSE

Jun 1 st	Chyulu Hills Members Trip
Jun 2 nd	FoCP Nature Walk
Jun 6 th	Morning Bird Walk
Jun 13 th	Morning Bird Walk
Jun 16 th	FoCP Nature Walk
Jun 17 th	Sunday Bird Watch
Jun 20 th	Morning Bird Walk
Jun 27 th	Morning Bird Walk

Bird ringing every Tuesday morning (check with Ornithology section, National Museums).

Birders Please Note! The Wednesday Morning Birdwalks meet at 8:30 am at the Nairobi National Museum. Transport is on a self-help basis. The group meets in the courtyard of the Nairobi National Museum, past the entrance to the galleries. We normally return at about 12:30 pm.

The Sunday Birdwatch on the **THIRD** Sunday of each month now also meets at 8:30 am, at the same location. It is a day trip; please bring water and lunch.

Mombasa Birdwalks On the 3rd Saturday of each month. For meeting time and place, please contact Taibali Hamzali <thamzali@gmail.com> / 0733-980540; or Doris Schaule <dorischaule@gmail.com> / 0722-277752. Or check Facebook page: <https://www.facebook.com/groups/FFJmombasa/>

Contact the office for information on other birdwalks in Kakamega, Kisumu, and other sites

Ngong Forest walks - 1st and 3rd Saturday at 9.00 am. Contact Simon 0729-840715

WORLD ENVIRONMENT DAY | JUNE 5



IF YOU CAN'T REUSE IT,
REFUSE IT

BEAT
PLASTIC
POLLUTION



WORLD
ENVIRONMENT
DAY

UN
environment

WELCOME ON BOARD

Nature Kenya (the EANHNS) would like to welcome the following members to the East Africa Natural History Society:

Corporate

Supreme Safaris Ltd

Family

Boniface Kimani Muthoni
Gurraj Jabbal
Deepali Gohil
Mbuvi Musingo T.E
Alice Migwi
Schup Mrs

Individual

Pam Tregenza
J. Y. Salehe
Neng Wei
Phoebe Ayugi Josiah
Stacy Pekke
Maryann Wambui Ngugi
Diana Kathambi Kirimi
Joyce Wanjala

Yussuf Bashir

David Clarence
Ruto Lyoba
Christopher Wathiani
Joseph Thiongo
David Leppard

Institution

Nature Tanzania
Ngaocofa CFA
Mweru-Biankure CFA
On Tulili CFA

Student

Ivan Oino
Austine Vuluku
Winnie Wangeci
Ziana Chelimo
Augustine Mukofu



Download free QR Readers from the web and scan this QR (Quick Response) code with your smart phone for pictures and more stories.

Yes! Start my NatureKenya membership

Surname _____
First Name _____
Ms/Mr./Title _____
Address _____
Tel _____
Mobile _____
Email _____

MEMBERSHIP TYPES

	Ksh Per Year
Full	2,000
Sponsor	6,000
Family	2,800
Student	1,200
Schools,	1,500
Clubs	
Corporates	20,000 - 30,000



JOIN/RENEW MEMBERSHIP

- Select 'Lipa na Mpesa'
- Select 'Pay Bill'
- Enter business number **100300**
- Enter account number (**put your lapsed membership number or write new member**)
- Enter the amount, enter your PIN
- Confirm details & press OK

For details on associated groups such as Youth Committee, Succulenta, and Friends of Nairobi Arboretum, City Park or Arabuko-Sokoke Forest, contact office@naturekenya.org