



Summary of Chairman's Report for 2015 - 2016

BACKGROUND

Established in 1909 as the Uganda and East Africa Natural History Society (EANHS)

2015-2020 Strategic Pillars

1. Save Species
2. Protect Sites and Habitats
3. Encourage Ecological Sustainability
4. Empower People to Support Nature

1. SAVE SPECIES

i) Prevent Extinctions

- Taita Apalis & Taita Thrush and Sagalla caecilian:
 - Action Plans developed with KWS
 - Leased 6.28 ha of Msidunyi forest fragment for Taita Apalis habitat
 - Purchase of 14 ha of critical Taita forest habitat with a Rain Forest Trust grant under way
- Vultures:
 - Awareness about poisoning and control of harmful pesticides in Maasai Mara initiated



EANHS Chairman Alan Carles addresses members during the 106th AGM. PHOTO: M. NZISA



Taita Apalis. PHOTO: P. STEWARD



Rüppell's Vultures. PHOTO: A. BOTHA

ii) Monitoring Threatened Species

- Taita Apalis & Taita Thrush; Clarke's Weaver; East Coast Akalat; Amani Sunbird; Golden-rumped Sengi (elephant-shrew)

iii) Monitoring Common Species

- Common Bird Monitoring in 18 Important Bird Areas

2. PROTECT SITES & HABITATS

- New Important Bird and Biodiversity Area proposed covering Loldiaiga Hills, Mukogodo Forest Reserve, and Samburu-Isiolo plains
- Rapid Ecosystem Services Assessment done in Taita Hills, Arabuko-Sokoke forest, Dakatcha Woodland and Yala Swamp
- Payment for Ecosystem Services Scheme (PESS) described for Yala Swamp
- MoU with Kitui County Government for 2 potential Important Bird Areas (Mutomo and Mumoni)
- 2014 IBA Status and Trends report for 64 IBAs published
- Site Support Group (SSG) members trained in monitoring (12 members) and in Fundamentals of Ornithology (20 members)

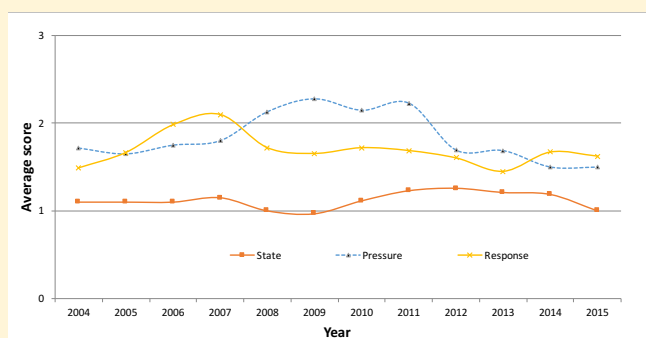
Trends 2004-2015 at Important Bird & Biodiversity Areas:

- State = General condition
Stable or reducing
- Pressure = Degree of threat
Reducing
- Conservation Responses
Stable

Habitat Restoration at Yala Swamp:

- 775 ha of Yala Swamp to be mapped for Community Conserved Areas (CCAs)
- 300 ha of degraded Yala Swamp being restored by Site Support Group and other CBOs
- 1,000 ha of Yala River riparian land to be restored by 21 trained CBOs who have grown 120,000 indigenous trees

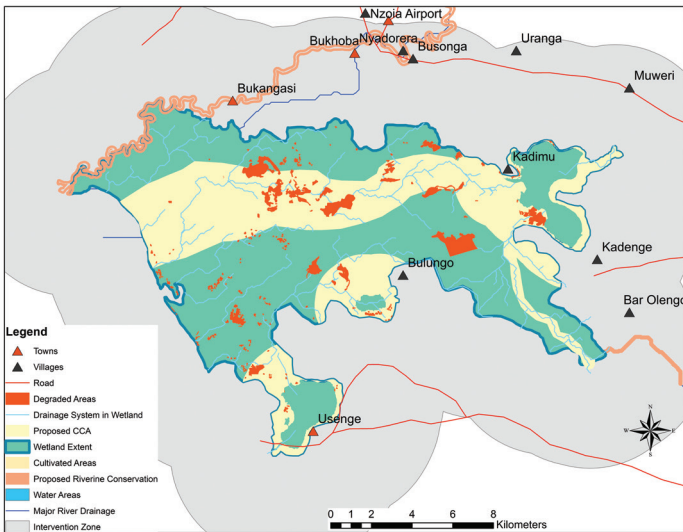
IBA MONITORING RESULTS 2004 - 2015



State = General condition
Pressure = Degree of threat
Response = Conservation action

SCORES: 0 = Very unfavourable,
1 = Unfavourable, 2 = Near favourable,
3 = Favourable

Cont'd from page 1



CCAs map showing degraded areas in Yala Swamp. MAP BY D. ODENYI

Western Forests GEF/UNDP project Impacts

- 14 Participatory Forest Management Plans completed in Kakamega, Nandi and Cherangani, and 12 signed by Kenya Forest Service
- A common vision (Integrated Forest Management Plans) agreed by stakeholders for Kakamega, Nandi and Cherangani ecosystems
- Forest management training for 38 Community Forest Associations and CBOs in Kakamega, Cherangani, South & North Nandi
- KWS and KFS capacity in Kakamega, Nandi and Cherangani enhanced through infrastructure and equipment (5 outposts/stations)

3. ECOLOGICAL SUSTAINABILITY

i) Ecosystem based Adaptation to Climate change in Primary Schools - Tana River County

- Eight schools now have water tanks, institutional energy saving stoves and solar lighting systems
- 18 Environmental clubs supported in establishing tree nurseries
- Climate Change educational materials developed
- Low cost drip irrigation established for 2 school gardens
- Climate proofing demonstrated with renovation of a classroom
- 5 sanitation and hand-washing facilities constructed

ii) Promoting Sustainable Production and Consumption

- Tana River Delta Land Use Plan (LUP) & Strategic Environmental Assessment (SEA) launched July 2015 by PS Environment and Lamu & Tana River Governors
- Tana River County appointed a Land Use Planning Liaison Officer to mainstream LUP in county plans and budgets
- Tana River Delta LUP and SEA win 1st Prize at Royal Town Planning Institute's (RTPI) Awards 2016 International Award for Planning Excellence
- SEA and LUP concept for Yala Swamp adopted by Busia and Siaya Counties and Inter-County LUP initiated

iii) Engaging with Policy making & legislation

- Policy briefs and guidelines developed for Geothermal energy (Baringo County) and Ecosystem based Adaptation policy guide (all counties)
- Participation in National processes such as National Biodiversity Strategy and Action Plan (NBSAP) and National and County Committees
- Advocacy efforts at Important Bird Areas in danger: Dakatcha, Hell's Gate, Bogoria, Yala, Tana, Nairobi National Park and Mau forest



RTPI AWARD: Tana River Delta Land Use Plan with Strategic Environmental Assessment wins 1st Prize at Royal Town Planning Institute's (RTPI) International Award for Planning Excellence. Contributors to SEA & LUP included Nature Kenya staff, the Kenya Government through an Inter-ministerial Committee and the Deltas Secretariat, Lamu and Tana River Counties, the Royal Society for the Protection of Birds and Peter Nelson of Planning Green Futures. PHOTO: COURTESY OF RTPI

4. EMPOWER PEOPLE TO SUPPORT NATURE

i) Training

- Farm forestry - 131 community members
- Business management - 22 community members
- Sustainability and self reliance - 66 community and SSG members
- Conservation agriculture - 27 community and SSG members



SUPPORT FOR NATURE: Primary school pupils who visited the Taita Eco Resource Centre. PHOTO: S. MWANG'OMBE

For updates go to
www.naturekenya.org

Editorial Team

Norman Kiboi
Gloria Waswa
Fleur Ng'weno
Serah Munguti
John Mwacharo

Layout John Mwacharo
Front banner J. Mwacharo



NatureKenya
THE EAST AFRICA NATURAL HISTORY SOCIETY

[f Nature-Kenya](https://www.facebook.com/Nature-Kenya) [t @Nature_Kenya](https://twitter.com/Nature_Kenya)

Connecting nature & people

For contributions, advertising and subscriptions - contact us at

P. O. Box 44486 GPO, Nairobi Tel: 020 3537568/ 0780149200/ 0751624312/ 0771343138
office@naturekenya.org www.naturekenya.org

Printed with support from:



ii) Improving Livelihoods

- Over the years, 8,000 beehives supplied to communities, providing income of about Ksh 96m
- A total of 2.6 million trees planted on-farm have potential to earn local people Ksh 22billion if sold as electricity poles
- Other ventures include ecotourism, seedlings, butterflies, wool, papyrus products, honey, etc.

iii) Mobilize Public and Political Support for Nature

Eco Resource Centres and environmental events reached 15,000 adults and 10,000 children in 60 schools in 2015

Publications:

- Journal of East African Natural History, now 107 years old; Vol. 104 (2 parts) published in 2015
- Scopus Ornithological Journal
- Forest Management Plans for Cherangani, Kakamega, Dakatcha
- Policy Guides to Climate Change Adaptation
- Tana River Delta - Planning Review

iv) Promote Conservation Partnerships

Partnership with:

National Museums of Kenya, BirdLife International, BirdLife Africa Secretariat, Tropical Biology Association (TBA), Royal Society for the Protection of Birds (RSPB), BirdLife Denmark (DOF), Birdlife Germany (NABU)

Collaboration with:

Kenya Government: NEMA, KWS, KFS, NMK, KEFRI
Civil Society: EAWLS, KFWG, KWF, ACC, AWF
Membership in: IUCN, ELCI, Ecotourism Kenya

v) Membership Benefits

- Being part of a community for conservation
- Admission to Nairobi Museum & Museum sites around Kenya
- Weekly and weekend field trips
- Monthly newsletter, annual magazine, other publications
- Use of EANHS/National Museum Library
- Opportunities for citizen science field work

vi) Membership Events and Outings

- Attended Nairobi International Trade Fair, Kenyatta University and Zetech career week and other events for promotion and membership recruitment
- Outings included 52 Wednesday morning bird walks, 12 Sunday Birdwatch and 4 weekend trips
- Events with VIVO Energy: football tournaments and tree planting at Kinangop and Dakatcha Woodland
- Successful annual Charity Golf Tournament in April



APPRECIATING NATURE: Fifty two Wednesday morning bird walks held. PHOTO: J. MWACHARO

5. FINANCIAL SUPPORT

- Nature Kenya's fundraising capacity enhanced
- Project funders diversified
- Project management reliable

6. MANAGEMENT

- Effective Governance
- Effective office operational systems
- Audits (core & projects) - timely & positive
- Supportive volunteers
- 14 committees active on conservation matters: some self-funding

Donors and Partners



naturalist

Bright planets and moon in June

By F. Ng'weno

New moon is June 5th, likely to be seen as a slender crescent on the 6th. This sighting will usher in Ramadhan, a holy month of fasting and prayer in the Islamic calendar. Other moon phases are: June 12 - first quarter; June 20 - full moon; June 27 - last quarter.

Two planets are brilliant in the evening sky in June 2016. Jupiter is high in the west in the evening. Mars, glowing orange-red and almost as bright as Jupiter this month, is in the east. Since mid-May, Mars appears brighter than it has in years, as its orbit takes it close to the earth. Saturn, less bright and more golden than Mars, is lower in the eastern sky.

The moon is near the star Regulus on June 10, and near Jupiter on the 11th. It is near the star Spica on June 14 & 15, near Mars on the 17th, and near Saturn on June 18 & 19.

In mid-June, the planet Mercury is quite bright at dawn, low above the sunrise. In late June, Venus begins to appear through the glare of the sunset.

Stars, June '16

The constellation Leo the

Lion is high in the west. You can imagine the bright star Regulus as the heart of the lion. From Regulus, a line of stars forms a sickle shape, like the head and mane of a lion.

Arcturus, a sparkling orange star, is high in the north. It forms a triangle with the blue-white star Spica almost overhead, and the planet Mars lower in the east.

Low in the northwest is the constellation of the Plough or Big Dipper. Can you see this constellation as a dipper - a deep, long-handled spoon for scooping up water?

In the south, the beautiful constellation of the Southern Cross stands upright, tilting towards the west during the evening. Two very bright stars, Alpha and Beta Centauri, seem to point toward the Southern Cross.

Sun, June '16

June 20 is the solstice, when the North Pole is most tilted towards the sun. Here on the equator, from mid March to mid September we see the sun traveling across the northern part of the sky during the day.

in the FIELD

JUNE 2016 AT A GLIMPSE

- June 1st Morning Bird walk
- June 4th FoCP Nature walk
- June 5th World Environment Day
- June 8th Morning Bird walk
- June 11th FoNA Guided tree walk
- June 15th Morning Bird walk
- June 19th Sunday Bird walk
- June 22nd Morning Bird walk
- June 27th FoNA Guided tree walk
- June 29th Morning Bird walk
- June 30th FoNA Public lecture

Bird ringing every Tuesday morning (check with Ornithology section, National Museums)

FoCP - Friends of City Park
FoNA - Friends of Nairobi Arboretum

OL DOINYO OROK MOUNTAIN DAY TRIP



Join us for day trip to Ol Doinyo Orok Mountain and enjoy forest walk, bird watching, wildlife, plants and picturesque sceneries on 2nd July 2016
Charges: 3,000/- per person Book and pay by 24th June

For more info Contact Norman on:
0739200216 or news@naturekenya.org

Birders Please Note! The Wednesday Morning Birdwalks meet at 8:30 am at the Nairobi National Museum. The walks will leave the museum by 8:45 am. The group meets in the courtyard of the Nairobi National Museum, past the entrance to the galleries. We normally return at about 12:30 pm.

Sunday Birdwatch (also called "Pot-luck Outings") meet the THIRD Sunday of each month at 9:00 am at the same location. Bring lunch.

Mombasa Birdwalks On the 3rd Saturday of each month. For meeting time and place, please contact Taibali Hamzali <thamzali@gmail.com> / 0733-980540; or Doris Schaule <dorischaule@gmail.com> / 0722-277752. Or check Facebook page: <https://www.facebook.com/groups/FFJmombasa/>

Contact the office for information on other birdwalks in Kakamega, Kisumu, and other sites

Ngong Forest walks - 1st and 3rd Saturday at 9.00 a.m. Contact Simon 0729-840715

WELCOME ON BOARD

Nature Kenya (the EANHS) would like to welcome the following members to the East Africa Natural History Society:

INSTITUTIONAL MEMBER

Yala Ecosystem S.S.G

FAMILY MEMBERS

Pablo Rojo
Xu Zhou

INDIVIDUAL MEMBER

Michele Church

STUDENT MEMBERS

Sarah Gathoni Ng'ang'a

Mary Mutisya
Gerald Shikunyi
Andrew Omolo
Angeline Kirungu
Eric Simba
Anne Kibunja
Vanbeek Nikolai
Charles Gatukui Nyogoro
Henry Ayiaga Ogora
Gladys Njeri Kariithi
David Karanja



WORLD ENVIRONMENT DAY JUNE 5 2016



ZERO TOLERANCE FOR THE ILLEGAL WILDLIFE TRADE



Download free QR Readers from the web and scan this QR (Quick Response) code with your smart phone for pictures and more stories.

ENTERTAINMENT . HOTELS . RESTAURANTS & CONFERENCE

Leisure & Travel
Guides East Africa Limited

P.O. Box 28084 - 00623, Nairobi, Kenya
Tel: 020-3747528, 3747258, 3745726 | Cell: 0724-746527, 0733-732239
Email: goplaces@visitingkenya.com
www.goplaceskenya.com

Yes! Start my NatureKenya membership

Surname _____
First Name _____
Ms/Mr/Title _____
Address _____
Tel _____
Mobile _____
Email _____

MEMBERSHIP TYPES

	Ksh Per Year
Full	2,000
Sponsor	6,000
Family	2,800
Student	1,200
Schools, Clubs	1,500
Corporates	20,000 - 30,000



JOIN/RENEW MEMBERSHIP

- Select 'Lipa na Mpesa'
- Select 'Pay Bill'
- Enter business number **100300**
- Enter account number (**put your lapsed membership number or write new member**)
- Enter the amount, enter your PIN
- Confirm details & press OK